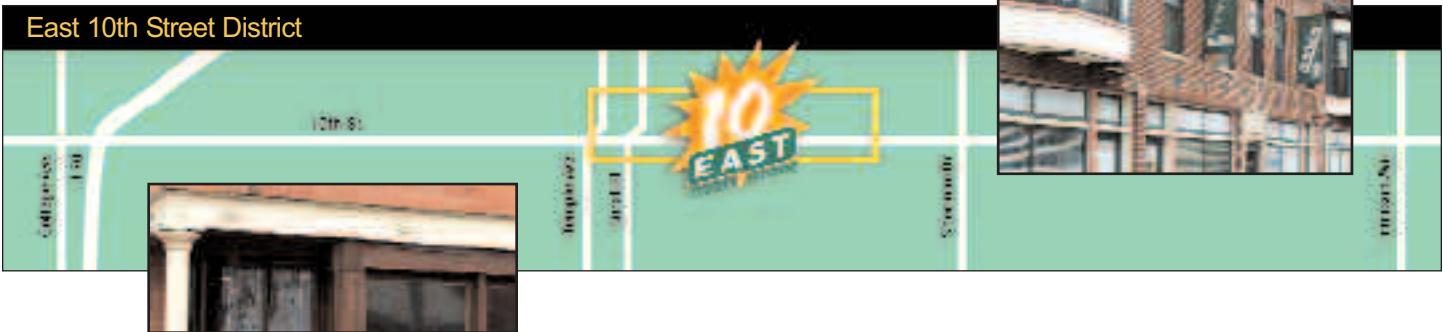


COLOR PALETTE



Color plays a very important role in commercial development. When applying color to a building, all architectural elements should be carefully considered. Thus, use of appropriate color to reinforce design direction will create a more appealing and coherent project. Additionally, the color scheme should be compatible with neighboring properties and complement an overall scheme for the corridor.

For your convenience, the East 10th Street Civic Association's Design Committee recommends the following color palette suitable for the majority of commercial and residential properties along the 10 East Main Street neighborhood business district.



10 East Main Street Color Palette:

Color Group	Benjamin Moore	Porter Paints	Sherwin Williams	
1	<p>Base Accent Accent</p>	<p>Mayflower Red HC-49 Weston Flax HC-5 Kennebunkport Green HC-123</p>	<p>Rich Clay 6780-3 Candle Glow 6194-2 Midland Green 7000-2</p>	<p>Rookwood Terra Cotta 2803 Peace Yellow 2857 Avocado 2861</p>
2	<p>Base Accent Accent</p>	<p>Hodley Red HC-65 Boothbay Gray HC-165 Glacier White AC-40</p>	<p>Chianti 6648-5 Cathedral Gray 7185-2 White Fog 6949-1</p>	<p>Rookwood Red 2802 Westchester Gray 2849 Nuance 7049</p>
3	<p>Base Accent Accent</p>	<p>Hamilton Blue Navajo White Classic Burgundy</p>	<p>Cape Blue 7103-2 Queen Anne's Lace 6703-1 Candy Apple 6042-6</p>	<p>Riverway 6222 Muslin 6133 Burgundy 6300</p>
4	<p>Base Accent Accent</p>	<p>Tate Olive HC-112 Quincy Tan HC-25 Hasbrouck Brown HC-71</p>	<p>Aloe Green 6959-3 Lincoln Home Beige 6898-2 Brown Rose 6666-1</p>	<p>Sage Green Light 2851 Roycroft Suede 2842 Rookwood Dark Brown 2808</p>
5	<p>Base Accent Accent</p>	<p>Briarwood Revere Pewter HC-172 Black Forest Green</p>	<p>Taupe Mist 6753-1 Gray Feather 7190-1 Mossy Stone 7080-2</p>	<p>Anonymous 7046 Useful Gray 7050 Rookwood Shutter Green 2809</p>
6	<p>Base Accent Accent</p>	<p>Platinum Gray Wickham Gray HC-171 Garrison Red HC-66</p>	<p>Sussex Gray 7090-2 Misty Dawn 7093-1 Spanish Tile 6054-7</p>	<p>Attitude Gray 7060 Tinsmith 7657 Alaea 7579</p>

The color swatches are a reproduction of the original and should not be used to generate final paint colors. Discount paint programs are available through the Civic Association from the companies featured in this color palette. For more information on the application of color, refer to the Association's Design & Sign Standards for Historic Features, pg. 32. Additional questions regarding this color palette and other district design standards can be directed to the East 10th Street Civic Association.

